



# COUNCIL MEETING 2016

November 11-12

*Sharing Our Passion For Life*



# WELCOME



Welcome to Council Meeting 2016!

It is my pleasure to invite you to meet your colleagues from around the world, learn about advances in marrow and cord blood transplantation, and hear from patients, donors and health professionals about how the work you do is changing lives.

Learn about innovative best practices your peers are using to overcome challenges and improve their services. Gain insights and inspiration from our plenary speakers, workshop presenters and panelists. Come prepared to share your own experiences and get answers to questions. Hear about new programs and materials for patients and caregivers. Learn about developments in clinical, scientific and health services research, and receive healthcare policy updates.

Take advantage of the Friday evening reception and networking opportunities to meet the people who develop the resources essential to our industry, and tell us what more we can do to support you in your work. Then join us for the Saturday evening dinner event featuring a first-time meeting for a donor and recipient, which epitomizes the significance of our combined efforts. Help us celebrate our achievements and work together to help even more people get the transplant they need to live longer, healthier lives.

Together, we are making a difference. Help us share our passion for life!

A handwritten signature in black ink that reads "Jeffrey Chell".

**Jeffrey Chell, M.D.**

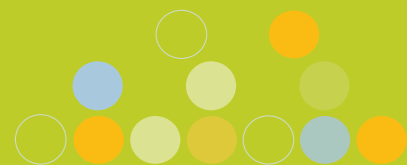
CEO, National Marrow Donor Program®/Be The Match®



**NMDP/Be The Match Executive Team**

Back row: Karen Dodson, Mike McCullough, Tracy Schmidt, Michael Boo

Front Row: Dr. Dennis Confer, Brian Lindberg, Dr. Jeffrey Chell, Amy Ronneberg, Joy King



# OVERVIEW

## Agenda Overview

Attendees have the opportunity to network and share ideas with colleagues from around the world. They also interact with product and service providers essential to our industry.

Council Meeting includes:

- Opening general session featuring network updates by NMDP/Be The Match CEO, Jeffrey Chell, M.D.
- Concurrent educational sessions on topics related to clinical and scientific research, health care policy, and patient and donor advocacy
- Friday evening reception and networking
- Saturday closing dinner, featuring entertainment and a first-time meeting of a donor and recipient pair.



## Background

The NMDP/Be The Match is the hub of a worldwide network of more than 500 leading medical facilities in marrow and cord blood transplantation. Patients in need of an unrelated transplant depend on the NMDP/Be The Match to find a matching marrow donor or cord blood unit. Each month, more than 520 patients receive transplants through this network. Since 1987, the NMDP/Be The Match has facilitated more than 74,000 transplants to give patients a second chance at life. Be The Match Foundation®, the fundraising partner of the NMDP/Be The Match, works to secure private support to advance the NMDP/Be The Match's mission.

## Who Should Attend

This annual meeting is held for the NMDP/Be The Match Network to collectively address the challenges of marrow and cord blood transplants for patients in need. Network partners, nurses, laboratory technologists, social workers, and other health professionals in the HCT field are encouraged to attend.



I really enjoyed the program, and it helped motivate my two co-workers who were attending Council Meeting for the first time.”

— 2015 Attendee





## Audience Profile

Attendees include the following:

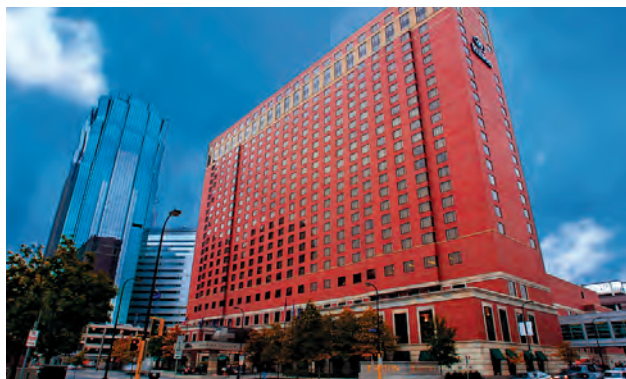
- Transplant Center Coordinators, nurses, social workers, and other members of the patient's transplant team who each play various roles throughout the patient's transplant process, which include selecting donors, educating and counseling patients and their families and providing direct patient care.
- Donor Center Coordinators who are responsible for working directly with donors and educating and counseling them throughout the evaluation and collection processes.
- Apheresis and Collection Center Coordinators who manage the peripheral blood stem cell (PBSC) and/or bone marrow collection processes, ensuring donor health and well-being and adherence to quality practices related to product collection.
- Cord Blood Bank Representatives who manage all aspects of collection, typing and storage of cord blood units.

“...it was most beneficial to finally meet and interact with my colleagues and work-up specialists from my region. Although it was a large event, I was able make contact with individuals I've only spoken with over the phone.”

*—Apheresis/Collection Center Attendee*



## Council Meeting Venue



**Hilton Minneapolis**  
**1001 Marquette Ave. S.**  
**Minneapolis, MN 55403**

[Online Reservations](#)

**Phone: 1 (612) 376-1000**

**Hotel Reservations: 1-800-HILTONS**

The Hilton Minneapolis hotel is a 25-story, Victorian-style brick high-rise boasting a fantastic location in the center of Minneapolis' financial center and just minutes away from many Minneapolis attractions. The hotel is a world-

class convention and leisure destination located near theaters, shops, restaurants and other cultural attractions. It is steps from Target Center and Target Field. The Mall of America, Minnesota Zoo and TCF Bank Stadium are just a short drive or ride away.

Enjoy a grand welcome as you arrive in the hotel lobby, offering floor-to-ceiling windows, crystal chandeliers, marble floors and a custom art collection featuring Minnesota landmarks by local artists.

## Contact Us

Contact Lisa Schuler, Council Meeting Planner, with questions at [councilmeeting@nmdp.org](mailto:councilmeeting@nmdp.org) or call 1 (800) 526-7809 or 1 (763) 406-4852.



# TABLE OF CONTENTS

<b>6</b>	<b>Meeting Agenda</b>
	Pre-Meeting Activities
	Friday
	Saturday
<b>9</b>	<b>Educational Session Information</b>
	Session Descriptions
<b>18</b>	<b>Continuing Education</b>
<b>19</b>	<b>Registration</b>
	Fees
	Register Online
	Cancellations
	Badge and Meeting Materials
<b>20</b>	<b>Hotel, Airfare and Transportation</b>
	Hotel Registration
	Airfare
	Ground Transportation
<b>22</b>	<b>General Meeting Information</b>
	ADA Services
	CHTC Exam
	Concierge
	Council Advisory Group
	Dinner Entertainment
	Education Advisory Team
	Grant Program
	Grant Reimbursement Check Pick Up
	Information Kiosk
	Meeting Presentation Materials
	Mobile App
	Name Badges
	Optional Tours
	Photography Release
	Registration Desk Hours
	Shop Be The Match
	Sponsor Exhibits
	Wi-Fi
<b>27</b>	<b>Sponsors/Exhibitors</b>
<b>29</b>	<b>Key Contacts</b>
<b>29</b>	<b>Future Council Meeting Dates</b>



Taneika, with her daughter, Jade, transplant recipient

“I came away feeling very humbled and inspired to be a part of such a great organization.”

— 2015 Attendee



# PRE-MEETING ACTIVITIES

## WEDNESDAY, NOV. 9, 2016: PRE-MEETING

**7:00 am to 7:00 pm**     **WMDA Working Group and Committee Meetings**

## THURSDAY, NOV. 10, 2016: PRE-MEETING

**7:00 am to 6:00 pm**     **WMDA Education Day and Working Groups**

**8:00 am to 5:00 pm**     **Computer Room**

**9:00 am to 7:00 pm**     **Council Meeting Registration**

**1:30 pm to 5:00 pm**     **Hematopoietic Transplant Coordinator Certification Exam**

**5:00 pm**     **BTM Office/Brew Tour** 3RD FLOOR, Meet at REGISTRATION DESK

**6:00 pm**     **Fit Tourist Walking Tour** 3RD FLOOR, Meet at REGISTRATION DESK



Be The Match Walk + Run participants

“It was inspirational to think that, somewhere out there, there was a family who had a whole lot of bad news and no matter what happened, I, as a donor, had given them a spark of hope.

—Randy, Donor





# COUNCIL MEETING AGENDA

## FRIDAY, NOV. 11, 2016: COUNCIL MEETING

7:00 am to 8:00 am

**Breakfast** 3RD FLOOR, GRAND BALLROOM

7:00 am to 5:00 pm

**Computer Room**

7:00 am to 5:30 pm

**Registration** 3RD FLOOR

7:00 am to 5:30 pm

**Sponsor Exhibits, Shop Be The Match and Discovery Center**  
3RD FLOOR

8:00 am to 10:00 am

**General Session and Awards Presentation**  
GRAND BALLROOM

10:00 am to 10:30 am

**Break**

10:30 am to 11:45 am

### Educational Breakout Sessions

See page 9 for session details.

Unconscious Bias: What is it , and why does it matter in healthcare?*	Understand and Start Preparing for the Global Registration Identifier for Donors (GRID) 10:30-11:45	Sterility Techniques for Marrow Collections: Sharing of Industry Best Practices 10:30-11:30	GVHD Biomarkers: Using Early Warning Signs to Drive Interventions 10:30-11:30	Path of Samples from Registration to Confirmatory Typing 10:30-11:45
--	--	--	---	---

11:30 am to 12:30 pm

**Lunch** GRAND BALLROOM

12:30 pm to 2:00 pm

**Plenary Session: Precision Medicine - Decoding the Impact of Individual Variability on Health and Disease**  
GRAND BALLROOM

2:15 pm to 3:30 pm

### Educational Breakout Sessions

See page 9 for session details.

HLA for the Rest of Us 2:15-3:15	Optimal Practices in Unrelated Donor Cord Blood Transplantation for Hematologic Malignancies 2:15-3:30	The Spectra Optia*: MNC and CMNC collection protocols, technical information from the manufacturer** 2:15-3:30	Financial Barriers to Transplant: Network Survey Review and Resources* 2:15-3:15	TC Coordinator Phenotypes: Do you have a match? 2:15-3:15
--	--	--	--	--

3:30 pm to 3:45 pm

**Break**

3:45 pm to 5:00 pm

### Educational Breakout Sessions

See page 9 for session details.

Increasing Access to BMT for Patients with SCD* 3:45-4:45	Traxis Tips and Tricks 3:45-5:00	Be The Match Donors and Immunogenetic Testing at Time of Recruitment 3:45-5:00	Virtual Presence 3:45-5:00	Donor Center Audits: Revised CIBMTR and Regulatory Focus 3:45-5:00
--	--	--	-------------------------------	---

5:00 pm to 7:30 pm

**Networking Reception** SALONS ABC

5:00 pm to 7:00 pm

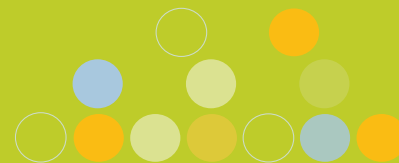
**Meet & Greet: Council Advisory Group, Case Management and Patient and Health Professional Services Staff** ROCHESTER ROOM

7:00 pm

**Fit Tourist Walking Tour** 3RD FLOOR, Meet at REGISTRATION DESK

*Educational session times and topics are subject to change.*

*\*Social Work Continuing Education credits available \*\* Continuing education credits are not available*



## SATURDAY, NOV. 12, 2016: COUNCIL MEETING

7:30 am to 8:30 am	<b>Breakfast</b> 3RD FLOOR, GRAND BALLROOM										
7:30 am to 4:00 pm	<b>Computer Room</b>										
7:30 am to 3:15 pm	<b>Sponsor Exhibits</b> 3RD FLOOR										
7:30 am to 4:30 pm	<b>Shop Be The Match and Discovery Center</b> 3RD FLOOR										
7:30 am to 6:00 pm	<b>Registration</b> 3RD FLOOR										
8:30 am to 10:00 am	<b>Plenary Session: Emerging Infectious Diseases in a Changing World</b> GRAND BALLROOM										
10:00 am to 10:30 am	<b>Break</b>										
10:30 am to 11:45 am	<table><tr><th colspan="4">Educational Breakout Sessions</th><th>See page 9 for session details</th></tr><tr><td>Detours Ahead: Not Your Average Workup 10:30-11:45</td><td>Cell Source Selection: The Debate Continues 10:30-11:45</td><td>Support for Patients and Caregivers After Transplant* 10:30-11:45</td><td>What Gets Measured, Gets Managed — Using Informatics to Make Decisions 10:30-11:45</td><td>HPC(A) Manufacturing Feasibility Study Conclusions Sharing 10:30-11:45</td></tr></table>	Educational Breakout Sessions				See page 9 for session details	Detours Ahead: Not Your Average Workup 10:30-11:45	Cell Source Selection: The Debate Continues 10:30-11:45	Support for Patients and Caregivers After Transplant* 10:30-11:45	What Gets Measured, Gets Managed — Using Informatics to Make Decisions 10:30-11:45	HPC(A) Manufacturing Feasibility Study Conclusions Sharing 10:30-11:45
Educational Breakout Sessions				See page 9 for session details							
Detours Ahead: Not Your Average Workup 10:30-11:45	Cell Source Selection: The Debate Continues 10:30-11:45	Support for Patients and Caregivers After Transplant* 10:30-11:45	What Gets Measured, Gets Managed — Using Informatics to Make Decisions 10:30-11:45	HPC(A) Manufacturing Feasibility Study Conclusions Sharing 10:30-11:45							
11:45 am to 12:30 pm	<b>Lunch</b> GRAND BALLROOM										
12:30 pm to 1:30 pm	<table><tr><th colspan="4">Educational Breakout Sessions</th><th>See page 9 for session details</th></tr><tr><td>Incidental Findings in Genetic Screening 12:30-1:30</td><td>Burnout and Technology* 12:30-1:30</td><td>Red Alert: Trekking Through Donor Assessment Concerns at Workup 12:30-1:30</td><td>Novel Clinical Care Models and Methods 12:30-1:30</td><td>AC Contract Manufacturing: A Sneak Preview of What's Coming Next 12:30-1:30</td></tr></table>	Educational Breakout Sessions				See page 9 for session details	Incidental Findings in Genetic Screening 12:30-1:30	Burnout and Technology* 12:30-1:30	Red Alert: Trekking Through Donor Assessment Concerns at Workup 12:30-1:30	Novel Clinical Care Models and Methods 12:30-1:30	AC Contract Manufacturing: A Sneak Preview of What's Coming Next 12:30-1:30
Educational Breakout Sessions				See page 9 for session details							
Incidental Findings in Genetic Screening 12:30-1:30	Burnout and Technology* 12:30-1:30	Red Alert: Trekking Through Donor Assessment Concerns at Workup 12:30-1:30	Novel Clinical Care Models and Methods 12:30-1:30	AC Contract Manufacturing: A Sneak Preview of What's Coming Next 12:30-1:30							
1:45 pm to 3:00 pm	<table><tr><th colspan="4">Educational Breakout Sessions</th><th>See page 9 for session details</th></tr><tr><td>Finding the Needle in the Haystack: Search Strategy for an Unrelated Donor 1:45-2:45</td><td>BMT CTN History and Scientific Impact 1:45-3:00</td><td>Support for Patients and Caregivers After Transplant* 1:45-3:00</td><td>Risky Business: The Donor is Ineligible!?! 1:45-2:45</td><td>Fine Tuning Collections on the Spectra Optia® — Tailoring the Collection to the Donor 1:45-3:00</td></tr></table>	Educational Breakout Sessions				See page 9 for session details	Finding the Needle in the Haystack: Search Strategy for an Unrelated Donor 1:45-2:45	BMT CTN History and Scientific Impact 1:45-3:00	Support for Patients and Caregivers After Transplant* 1:45-3:00	Risky Business: The Donor is Ineligible!?! 1:45-2:45	Fine Tuning Collections on the Spectra Optia® — Tailoring the Collection to the Donor 1:45-3:00
Educational Breakout Sessions				See page 9 for session details							
Finding the Needle in the Haystack: Search Strategy for an Unrelated Donor 1:45-2:45	BMT CTN History and Scientific Impact 1:45-3:00	Support for Patients and Caregivers After Transplant* 1:45-3:00	Risky Business: The Donor is Ineligible!?! 1:45-2:45	Fine Tuning Collections on the Spectra Optia® — Tailoring the Collection to the Donor 1:45-3:00							
2:45 pm to 3:15 pm	<b>Break</b>										
3:15 pm to 4:30 pm	<table><tr><th colspan="4">Educational Breakout Sessions</th><th>See page 9 for session details</th></tr><tr><td>Breaking Bad News — The Donor Perspective* 3:15-4:15</td><td>Friending KIR 3:15-4:15</td><td>Partnering to Develop Health Professional Leaders: Advancing the HCT workforce* 3:15-4:30</td><td>The Donor Voice: Listening, learning and leading them down the donation pathway 3:15-4:30</td><td>What's in the Bag? A Deeper Look at Donated Products 3:15-4:30</td></tr></table>	Educational Breakout Sessions				See page 9 for session details	Breaking Bad News — The Donor Perspective* 3:15-4:15	Friending KIR 3:15-4:15	Partnering to Develop Health Professional Leaders: Advancing the HCT workforce* 3:15-4:30	The Donor Voice: Listening, learning and leading them down the donation pathway 3:15-4:30	What's in the Bag? A Deeper Look at Donated Products 3:15-4:30
Educational Breakout Sessions				See page 9 for session details							
Breaking Bad News — The Donor Perspective* 3:15-4:15	Friending KIR 3:15-4:15	Partnering to Develop Health Professional Leaders: Advancing the HCT workforce* 3:15-4:30	The Donor Voice: Listening, learning and leading them down the donation pathway 3:15-4:30	What's in the Bag? A Deeper Look at Donated Products 3:15-4:30							
4:00 pm to 6:00 pm	<b>Grant Reimbursement Check Pick Up</b> REGISTRATION DESK										
5:00 pm to 6:00 pm	<b>Networking Social Hour</b> 3RD FLOOR FOYER										
6:00 pm to 8:00 pm	<b>Dinner Event: Donor/Recipient Meeting</b> GRAND BALLROOM										
8:00 pm	<b>Meeting Adjourns</b>										

*Educational session times and topics are subject to change.*

*\*Social Work Continuing Education credits available*





# EDUCATIONAL SESSION INFORMATION

## OVERVIEW

These sessions provide attendees with the opportunity to discuss current issues, innovations, and trends in the field of hematopoietic cell transplantation (HCT), as well as discover operational, clinical and psychosocial approaches to optimize patient and donor care.

“Love the variety of subject and topics offered at Council Meeting definitely something for everyone at every level of experience.”

— *Research Center Attendee*

## AC Contract Manufacturing: A Sneak Preview of What's Coming Next

Take a sneak peek into NMDP's upcoming contract manufacturing projects that aim to improve FDA compliance with Good Manufacturing Practice (GMP) regulations and accountabilities over the next two years. After a brief overview, session attendees will view elements of the project and engage in discussion with NMDP staff and pilot AC participants.

**Audience:** Apheresis Center Attendees

**Speakers:** Amy E. Hines BSN, RN, CHTC, Katherine St. Martin, MS, RAC(US) and Jody McNaughton

## Be The Match Donors and Immunogenetic Testing at Time of Recruitment

All new donors now have the highest resolution immunogenetic testing possible performed at the time they are first listed on Be The Match Registry, in addition to other markers used to select the most preferred donor for your patient needing transplant. In this session, you will learn about the newest cutting-edge strategies used by Be The Match laboratories to provide full gene HLA testing and other markers, like ABO, used in donor selection; how that information is presented to you; and special considerations for ABO and RhD testing methodologies.

**Audience:** Transplant Center Attendees

**Speaker:** Brianna Springer

## BMT CTN History and Scientific Impact

The Blood and Marrow Transplant Clinical Trials Network (BMT CTN) was established in October 2001 to conduct large, multi-institutional clinical trials to improve the outcomes of hematopoietic cell transplantation (HCT) for patients facing life-threatening disorders. In the past 15 years, the BMT CTN has launched 38 trials that have enrolled over 7,900 patients. This session will focus on the genesis and growth of the BMT CTN and highlight several recently completed trials.

**Audience:** All Attendees

**Speakers:** Daniel Weisdorf, MD, Stephanie J. Lee, MD and Mary Horowitz, MD, MS



## Breaking Bad News: The Donor Perspective

Effective communication is a skill that people can develop through practice and training. Effective communication helps you connect, collaborate and share information with others. Communication can be challenging, however, when bad or serious news needs to be shared. Learn how communication strategies used in medical settings can improve how you communicate serious news on the job and in your personal life.

Back by popular demand, this session returns from last year but this time with a speaker who has experience working with donors.

**Audience:** All Attendees

**Speaker:** Corina Gonzalez, MD

## Burnout and Technology

The prevalence of burnout is increasing as technology further blurs the line between work and home. Burnout can get the better of you, even when you have great passion for your work. Learn to recognize the warning signs and know when it's time to take action.

**Audience:** All Attendees

**Speaker:** Thomas A. Colbert, MSCP, CCMP

## Cell Source Selection: The Debate Continues

Experts in adult unrelated, cord blood and haploidentical donor transplantation will present case studies on the benefits and advantages of using each stem cell source for transplant. Hear the latest updates on donor cell source selection and considerations for the best cell source in different clinical scenarios.

**Audience:** All Attendees

**Speakers:** Stephanie J. Lee, MD, Juliet Barker, MD and Ephraim Fuchs, MD, MBA

## Detours Ahead: Not Your Average Workup

While every workup is unique, some have more challenges than others. Join your AC, CC, TC and DC colleagues in a roundtable format as you discuss how to navigate detours and get your workup safely back on the road to its destination — transplant! Topics include unusual donor situations, unique research requests, and shifting recipient landscapes. Buckle up, this might be a bumpy ride!

**Audience:** Apheresis and Collection Center, Donor Center and Transplant Center Attendees

**Speakers:** Heidi McFadyen, BA, Kim Ikenberry, BS and Suzanne Cantrell, RN

“Great chance to discuss topics presented. Meet and greet with other attendees, presenters, and staff.”

— *Transplant Center Attendee*



## Donor Center Audits: Revised CIBMTR and Regulatory Focus

The CIBMTR has had a PBSC clinical trial monitoring (audit) program that has focused on protocol compliance and clinical trial regulatory elements. In 2010, the NMDP/Be The Match Regulatory Compliance team launched a separate audit program focusing on donor center compliance to FDA regulatory requirements for product manufacturing.

This session introduces the revised CIBMTR and Regulatory audit programs that will launch in October 2016. The CIBMTR plans to implement a remote monitoring process while the regulatory compliance audits will continue to be conducted on-site.

**Audience:** Donor Center and Apheresis Center Attendees

**Speakers:** Stephanie Thompson and Deb Christianson

## Financial Barriers to Transplant: Network Survey Review and Resources

One of the greatest barriers to transplant is often insurance coverage. The NMDP/Be The Match Payer Policy team completed a comprehensive survey to learn about financial barriers to transplant from the transplant center perspective. Learn the results of the survey and find out about NMDP's advocacy efforts and new Reimbursement Support Center.

**Audience:** Transplant Center Attendees

**Speakers:** Alicia Silver, MPP and Kristen Edsall, RN, BSN, MSN

## Finding the Needle in the Haystack: Search Strategy for an Unrelated Donor

A panel of NMDP/Be The Match Immunogenetic Specialists describe how they use search strategy techniques to identify the best-matched unrelated donors on actual patient searches. Attendees will receive the patient searches prior to the session and will have an opportunity to ask questions of the panelists as they discuss the cases throughout the session.

**Audience:** Transplant Center Attendees

**Speakers:** Janelle Olson, PhD, Gretta Stritesky, PhD and Abby McDonald, PhD

## Fine Tuning Collections on the Spectra Optia: Tailoring to the Donor

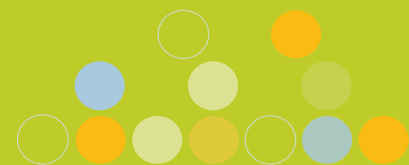
Attendees will learn about customizing each collection according to a donor's unique characteristics. Explore the kinetics of mobilization, when to use the mononuclear cell (MNC) or continuous mononuclear cell (CMNC) collection protocol and how to use the donor's peripheral CD34+ counts as a predictor of blood volume needed to process. Discover how these techniques can help you maximize efficiency and potentially decrease the volume processed while shortening overall collection time.

**Audience:** Apheresis Center Attendees

**Speakers:** Johannes Fischer, MD and Kenneth D. Friedman, MD



Ava, transplant recipient, with her parents; Ron and Janet





## Friending KIR: How Does this Complex Gene System Apply to Donor Selection?

This session will get back to the basics and unravel the complexity of KIR (Killer-cell immunoglobulin-like receptors) by explaining the basic biology, function, and concepts behind the use of KIR in transplantation.

**Audience:** Transplant Center Attendees

**Speaker:** Carolyn Hurley, PhD, D(ABHI)

## GVHD Biomarkers: Using Early Warning Signs to Drive Interventions

Acute Graft Versus Host Disease (GVHD) remains one of the most devastating complications of hematopoietic stem cell transplantation. Many research studies have focused on earlier detection of acute GVHD onset to speed the path to treatment. This session will discuss how biomarkers are being used and discuss future implications for patient care.

**Audience:** All Attendees

**Speakers:** John Levine, MD and Sophie Paczesny, MD, PhD

## HLA for the Rest of Us

Calling all non-science geeks! If you have little to no knowledge of HLA and biology, this fun and interactive session is for you (HLA savvy folks can explore educational methods). We will define in simple terms what HLA is, why it matters, and how to communicate HLA to donors, patients, and the general public. Come see what all the fuss is about and what HLA is ... for the rest of us.

**Audience:** All Attendees

**Speakers:** Marney Milsten and Tami Maus, MT(ASCP), CHTC

## HPC(A) Manufacturing Feasibility Study Conclusions Sharing

The Manufacturing Feasibility Study (MFS) was designed to challenge the existing NMDP/Be The Match process of HPC(A) collection by increasing FDA compliance to product testing and lot release regulations at a subset of representative ACs. This session will share the MFS's data and conclusions regarding the timing and resource challenges that AC partners experience during HPC(A) manufacturing.

**Audience:** Apheresis and Collection Center Attendees

**Speakers:** Amy E. Hines BSN, RN, CHTC, Katherine St. Martin, MS, RAC(US), Jennifer Rabin, RN, BSN, Anita Hove, RN, HP(ASCP) and Stephanie Dormes, MPH



## Incidental Findings in Genetic Screening: To Report Or Not To Report —That Is Only Part Of The Question

Next-generation sequencing technologies, including whole-genome sequencing, will be used with increasing frequency in clinical practice and genomic research. One consequence of these sophisticated research tools is that they can produce incidental or secondary genetic results that are unrelated to the aims of the clinical diagnostics or research study. Physicians, genetic counselors, research investigators and institutional review boards now face difficult questions regarding how to manage these unintended genetic findings, and the ethics and impact associated with the potential return of results to patients and research study participants. In this session, two genetic counselors will explore aspects of these current considerations and developing consensus recommendations; and their impact on clinicians, research investigators, patients and research study participants.

**Audience:** All Attendees

**Speakers:** Julia Wynn, MS, CGC and Sarah Kalia, ScM, CGC

## Increasing Access to Transplant for Patients with Sickle Cell Disease

Advances in blood and marrow transplant (BMT) have made the possibility of curing sickle cell disease (SCD) a reality. Outcomes for both related and unrelated allogeneic transplants have improved significantly over the last two decades. Yet, many patients in need of this life-saving therapy face significant barriers including insurance, donors and access to clinical trials. This session will provide an overview of advances in BMT for SCD, current clinical trials, and organization wide initiatives to increase access to BMT for patients for whom it's appropriate.

**Audience:** All Attendees

**Speakers:** Sonja L. Banks, MPA, MBA, Linda Burns, MD, Constance Benson and Lensa Idossa, MPH

## Novel Clinical Care Models and Methods

A transplant center staff panel will share clinical care models, unique processes and innovative ideas being used to improve patient care and overall satisfaction in the BMT clinical setting. Transplant center representatives will also share the outcomes of implementing those changes and describe how they measured the impact.

Audience members will have opportunities to ask questions and share their own novel practices with peers.

**Audience:** Transplant Center Attendees

**Speakers:** Elisa Malek, RN, BSN, OCN, Courtney Byam, CHTC and Martha Lassiter, RN, MSN, AOCNS, BMTCN

“I thought all the sessions offered did a great job of blending medical learning’s/insights with professional development opportunities to create a well-rounded event for attendees. I learned about things from the internal workings and offerings of NMDP to what was happening in the medical research realm to how to manage through emotionally difficult times.”

— Donor Center Attendee



## Optimal Practices in Unrelated Donor Cord Blood Transplantation for Hematologic Malignancies

Universal adoption of umbilical cord blood transplant (CBT) has been delayed due to post-infusion morbidity and mortality, and intensive management of the patient. However, transplant complications can be mitigated and costs associated with complications can be reduced with improved care of the patient. This session will focus on the “how to” practices of United States transplant centers that specialize in adult and pediatric CBT by addressing everything from donor searches to conditioning regimens to supportive care.

**Audience:** Transplant Center and Cord Blood Bank Attendees

**Speakers:** Juliet Barker, MBBS and Joanne Kurtzberg, MD

## Partnering to Develop Health Professional Leaders: Advancing the HCT Workforce

Engaging health professionals in professional development activities has been shown to increase retention and ultimately improve patient care. The rapidly changing hematology/oncology healthcare environment and current economic climate results leave health professionals responsible for their own continuing professional development. Non-profit organizations and professional associations/societies offer clinical education and leadership opportunities for nurse practitioners, physician assistants, pharmacists, nurses and social workers. Learn how partnering with the NMDP/Be The Match supports professional growth and furthers our mission.

**Audience:** Transplant Center Attendees

**Speakers:** Kim Schmit-Pokorny, RN, MSN, OCN, BMTCTM, Nancy J. Boyle, MSW, LCSW, OSW-C, Jacqueline Dioguardi PA-C and Tippu Khan, PharmD, BCOP

## Path of Samples from Registration to Confirmatory Typing

Gain an understanding of the sample collection path from registration of a new registry member's buccal swab to confirmatory typing (CT). This presentation will include an explanation of buccal swabs storage in the repository and HLA lab testing. Additionally, this session will provide a description of donor typing request options - high resolution (HR), confirmatory typing (CT), and typing at DRB1 (DR) - and the processes involved, including the shipment of samples and testing of infectious disease markers (IDMs).

**Audience:** Donor Center and Transplant Center Attendees

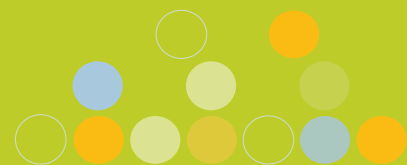
**Speakers:** Danielle Johnson, BS and Dina Yushkevich, MNM, BA

## Red Alert: Trekking Through Donor Assessment Concerns at Workup

More donors need to be cleared at warp speed these days. Join our NMDP/Be The Match physicians as they travel to a universe of medical ‘red alerts’ that could impact your donor's assessment and clearance. Using case studies and group discussion, our fearless physicians will transport you through assessment of medical issues such as clotting disorders, mental health concerns and genetic conditions. Identifying ‘red alerts’ early in the workup process will aid in achieving your Stardate Objective (collection date) to meet the Prime Directive (safe collection for your donor and product for the recipient.)

**Audience:** Donor Center Attendees

**Speakers:** Linda Burns, MD and John Miller, MD, PhD





## Risky Business: The Donor is Ineligible!?!

From a recent tattoo to past travel to a Zika virus risk area, it is not unusual to be informed that the donor is ineligible. In this interactive session, our NMDP/Be The Match physicians will review just what “risks” make a donor “ineligible” and how these risks are defined. The sometimes puzzling terms: suitable, eligible, and incomplete eligibility will be addressed. Interpreting positive infectious disease tests will be highlighted through review of case studies in addition to risks to donors and patients of HCTs as compared to organ and blood donors and recipients.

**Audience:** Transplant Center Attendees

**Speakers:** Linda Burns, MD and John Miller, MD, PhD

## The Donor Voice: Listen, Learn and Lead Registry Members Down the Donation Pathway

Effective communication and delivery while working with donors is a skill set that enhances the donor experience. Successful calls with potential donors consist of four key elements: introduction, delivery, body and closing. Come learn and practice new techniques and listen to recorded calls with donors.

**Audience:** Donor Center Attendees

**Speakers:** Marisa McDaniel, BA, Doug Neis and Rachel Schuler, BA, MS

## The Spectra Optia: MNC and cMNC Protocols, Technical Information from the Manufacturer

With the sunseting of the Cobe® Spectra in 2017, the Spectra Optia® will be the instrument of choice for many apheresis centers. A representative from Terumo BCT, the manufacturer of the Spectra and Optia, will present an educational session highlighting optimizing collections on the Optia, including information about both the mononuclear cell (MNC) and continuous mononuclear cell (CMNC) collection protocols.

**Note:** *Continuing education credits are not available for this session.*

**Audience:** Apheresis Center Attendees

**Speaker:** Terumo Representative - Lori Rabe Harada, RN BSN and Joseph Roig, MS

## Sterility Techniques for Marrow Collections: Sharing of Industry Best Practices

Can the number of positive marrow product cultures be reduced? A panel of subject matter experts will share their best practices for sterile techniques for marrow collection.

**Audience:** Collection Center Attendees

**Moderator:** Linda Burns, MD

**Speakers:** Leigh Poston, BS, MT (ASCP), Tim Krepski, RN, BSN, CHTC and Michael Styler, MD



## Support for Patients and Caregivers After Transplant

With patients living longer after allogeneic blood and marrow transplant, there is recognition of quality of life and social challenges. Be The Match Patient Services has a variety of survivorship programs and resources to address such challenges. A panel of recipients and caregivers will share their transplant journey by outlining strategies to cope with life after transplant, connect with other survivors, and make meaning of their experience.

**Audience:** Transplant Center Attendees

**Moderator:** Katie Schoeppner, MSW, LICSW

**Speakers:** Debbie Jacobson, Lauren Harding, MSW and Patient and Caregiver Panel

## Transplant Center Phenotypes: Do You Have a Match?

On the surface, positions between transplant centers may seem comparable, but are they really a match if you examine more closely? Have you ever wondered if the TC coordinator position at other centers is structured differently than yours? How are the roles and responsibilities different? Network with other TC coordinators in small groups to share your role and responsibilities, your reporting structure and other staffing aspects of your transplant team. Be prepared to bring documents to share with others. More instructions will be sent prior to the meeting for those who register for this session.

**Audience:** Transplant Center Attendees

**Moderators:** Pam Robinett and Kathy Hansen

## Traxis® Tips and Tricks

Are you using Traxis to its full potential as you manage your patients' search and transplant? As with most technology, we often master the basic features, but may not realize all the potential we have at our fingertips (or mouse)! Learn about the most recent software enhancements and ways you can maximize Traxis to improve searches and patient case management. In this session, case examples and peer discussion will help you maximize Traxis data and features to speed up your patient search times and select the best donor source.

**Audience:** Transplant Center Attendees

**Speakers:** Deborah Wells, CHTC, Stacey Prieur, RN, BScN, CHTC and NMDP Panel

## Unconscious Bias: What Is It and Why Does It Matter in Healthcare?

Explore the systemic and behavioral barriers to healthcare equity through the lens of treating sickle cell disease (SCD). SCD is an inherited blood disorder that primarily affects people with African, Mediterranean, South American, Southeast Asian, and Middle Eastern ancestry. Acquire skills to recognize and overcome unconscious (implicit) bias through one physician's experiences in treating patients of color.

**Audience:** All Attendees

**Speaker:** Stephen C. Nelson, MD



## Understand and Start Preparing for the Global Registration Identifier for Donors (GRID)

By late 2018, all adult donors and listed cord blood units throughout the world must use the new Global Registration Identifier for Donors (GRID) during the search process. Intended for all audiences, this session will further define the GRID format, timelines for implementation, and enable attendees to start thinking about how to prepare for GRID within their organization.

**Audience:** All Attendees

**Speaker:** Salmah Ahmed, BSc

## Virtual Presence

When employees, colleagues and customers are communicating across cities, time zones and even countries, building strong relationships is essential to getting things done — and also more challenging. When they can't rely on the benefits of in-person interaction, the most successful professionals harness their virtual presence to connect authentically with their remote audience in order to influence and inspire their teams across the virtual divide.

**Audience:** All Attendees

**Speakers:** Jeff Stoner, M.Ed and Greg Marchi, MBA

## What Gets Measured, Gets Managed: Using Informatics to Make Decisions

Speakers from the Dana Farber Cancer Institute & the Sarah Cannon Blood Cancer Network will share how they have successfully used data to effect change and improvements within their program. Consult with other transplant center attendees to learn how they are using data to make informed decisions. Gain insight and ideas on how analytics are improving patient care and the impact on operations through roundtable discussions.

**Audience:** Transplant Center Attendees

**Speakers:** Bethany King, MS, CQA(ASQ), Betsy Blunk, BSN, RN, CHTC, BMTCN, Theresa Hahn, PhD and Stephen Spellman

## What's in the Bag? A Deeper Look at Donated Products

Take a deeper look at the contents within a peripheral blood stem cell and marrow collection bag. Understand key components that assist in the transplant decision-making process. Learn about hematopoietic progenitor cell mobilization strategies and stem cell graft requirements.

**Audience:** Apheresis Center, Collection Center and Donor Center Attendees

**Speaker:** Martin Körbling, MD

Thanks to the Council Meeting Education Advisory Teams for planning the educational content of this meeting.





# CONTINUING EDUCATION

## Learning Objectives

Council Meeting 2016 attendees will:

- Discuss 2016 issues, innovations and trends in the field of HCT
- Discover operational, clinical and psychosocial approaches to optimize donor and patient care
- Participate in an environment of peer networking and collaboration

## Online Meeting Evaluations and Verification of Participation

Attendees will complete meeting evaluations and verify participation for continuing education credits online after Council Meeting.

### Maximum CE Credits Available

Friday, Nov. 11 – 5.25 contact hours

Saturday, Nov. 12 – 6.25 contact hours

Total 2016 Meeting Hours: 11.5 contact hours

## Continuing Education Requirements

Continuing education credits are available for participants who attend the sessions and then **complete and submit** the online evaluation.

Attendees will receive an email following the meeting to verify participation and complete evaluations for all sessions attended. Upon completion of the online evaluation, attendees will receive a Certificate of Attendance via email stating the number of continuing education credits earned. Please retain this email for your training records.

**Deadline: DEC. 5, 2016.** Credits will **only** be awarded to those who submit the required evaluation by DEC. 5, 2016. Continuing education credits **will not** be issued after this date.

## Continuing Education is available for:

- **Medical Technologists:** The National Marrow Donor Program is approved as a provider of continuing education in the clinical laboratory sciences through the ASCLS PACE Program. ASCLS PACE® 1861 International Drive, Suite 200, McLean, VA 22102.  
Up to 11.5 contact hours may be claimed for program #11-026-16.
- **Nurses:** The National Marrow Donor Program is accredited as a provider of continuing nursing education by the American Nurses Credentialing Center's Commission on Accreditation (COA).  
Up to 11.5 contact hours may be claimed for this educational activity.
- **Social Workers:** National Marrow Donor Program, #1386, is approved as a provider for social work continuing education by the Association of Social Work Boards (ASWB) [www.aswb.org](http://www.aswb.org), through the Approved Continuing Education (ACE) program. National Marrow Donor Program maintains responsibility for the program. ASWB Approval Period: 08/10/2016 - 08/10/2019. Social workers should contact their regulatory board to determine course approval for continuing education credits  
Social workers participating in this program may receive up to 6.5 clinical continuing education clock hours.
- **All other health professionals** requesting continuing education credit for this activity will be issued a Certificate of Attendance.



# REGISTRATION

Registration for Council Meeting 2016 includes attendance at all general and educational sessions (unless otherwise noted), the Friday night networking reception, Saturday night donor/recipient meeting and event, as well as meals and beverage breaks held during scheduled meeting activities.

## Registration Fees

- Council Meeting Early Discount Registration Fee (Register before Oct. 1, 2016): \$350
- Council Meeting Standard Registration Fee: \$400
- Council Meeting Friday only: \$175
- Council Meeting Saturday only: \$200
- Council Meeting Saturday Dinner only: \$100

## Important Dates

- Oct. 1 Early Registration Discount Ends
- Oct. 13 Last Day for Hilton Group Rate
- Oct. 31 Online Registration Closes

## Register Now

To complete the quick and easy registration, click the button above or go to:

[Network.BeTheMatchClinical.org/Council](http://Network.BeTheMatchClinical.org/Council) and click on **Register Now**. You will receive an email confirmation of your registration and a summary of your selected itinerary once you complete registration. Walk-in registration for Council Meeting is not encouraged.

Attendees must provide a credit card (VISA or MasterCard) or mail a check to the address below for meeting registration fees:

NMDP/Be The Match  
Attn: Council Meeting, Lisa Schuler  
500 N 5th St  
Minneapolis, MN 55401

## Registration Cancellations

NMDP/Be The Match requires written notification in order to process a cancellation.

Registration fees will be refunded in full for cancellations received by the NMDP/Be The Match on or before Oct. 1, 2016. After this date, no registration refunds will be provided for cancellations. Send cancellation requests to: [councilmeeting@nmdp.org](mailto:councilmeeting@nmdp.org). Please note, guests are responsible for cancelling their own hotel and travel reservations.

## Badge and Registration Materials

Council Meeting registration materials, including attendee badges and optional event tickets, will only be available for pick up onsite at the Hilton Minneapolis meeting venue. Registration check in opens at 9:00 am on Thursday, Nov. 10.

Participant name badges must be displayed for admittance to all Council Meeting sessions, meals and social events.



# HOTEL, AIRFARE AND TRANSPORTATION

## Hotel

**Hilton Minneapolis**  
**1001 Marquette Ave. S.**  
**Minneapolis, MN 55403**

All Council Meeting attendees are responsible for making their own hotel reservations and must provide a credit card to hold the reservation. Lodging at the Hilton Minneapolis is available at the discounted meeting rate of \$159 plus taxes per night for single and double occupancy. The NMDP/Be The Match contracted room block is available until Oct. 13, 2016, or until the group block is sold out, whichever comes first. Discounted room rates are available on a first-come, first-serve basis. Standard room rates at the Hilton Minneapolis average \$310 plus tax per night for single occupancy.



**Make your reservations either online or by phone:**

### Hilton Minneapolis Online Booking

- Click the button above for Hilton Minneapolis online booking. An immediate electronic confirmation will be provided.
- Call the Hilton Minneapolis at **1-800-HILTONS** or at **1 (612) 376-1000**. Indicate that you are attending the NMDP/Be The Match Council Meeting. A confirmation number will be provided over the phone when you make your reservation.

**NMDP/Be The Match occupancy rates for the Hilton Minneapolis are as follows:**

- Single/Double Standard – \$159 plus tax per night
- Single/Double Executive Floor – \$199 plus tax per night
- Junior Suite – \$209 plus tax per night
- Junior Suite Executive Floor – \$259 plus tax per night
- Additional Person – \$20 per night

## AIRFARE

Council Meeting attendees are responsible for making their own airfare reservations. Attendees are welcome to contact the NMDP/Be The Match travel agents to make flight arrangements for Council Meeting. Call 1 (866) 783-5251 or 1 (612) 627-8108 between 8:00 am and 5:00 pm Central Time for assistance.

Attendees are also welcome to book their airfare to Council Meeting through their own preferred travel agency or website.





## GROUND TRANSPORTATION

All ground transportation expenses are the responsibility of each attendee.

- **SuperShuttle Transportation Services** are available for the discounted rate of \$15 one way or \$26 round trip per person with the online [SuperShuttle Coupon](#). Details for making reservations and locating SuperShuttle vans at the airport can be found on the coupon.
- **Taxi service** is available for approximately \$35 one way.
- **Light-rail service** is available for \$2 one way from the Minneapolis-St. Paul International airport to the downtown Minneapolis Nicollet Mall Station. This station is located a couple blocks from the Hilton Minneapolis.



Owen, transplant recipient, with his donor, Laura



# GENERAL MEETING INFORMATION

## ADA Accessibility/Accommodations

NMDP/Be The Match is committed to ensuring that Council Meeting is fully accessible to all persons. If you have a specific dietary or accessibility requirement, please indicate this when you register and every effort will be made to accommodate your request. If you require auxiliary aids or services identified in the Americans with Disabilities Act, please submit a request for this when you register.

## CHTC Exam

NMDP/Be The Match will offer coordinators the opportunity to take the Hematopoietic Transplant Coordinator Certification Examination in paper and pencil format while attending Council Meeting. Eligibility criteria, cost and the exam application are available in the Candidate Handbook at [Network.BeTheMatchClinical.org/Council](http://Network.BeTheMatchClinical.org/Council). Eligible candidates must submit the application specific to the Nov. 10, 2016, test date when applying. The application deadline to sit for this exam is Friday, Sept. 12, 2016.

Please contact Nicole Heino at 1 (763) 406-4811 or [nheino@nmdp.org](mailto:nheino@nmdp.org) with any CHTC exam questions.

## Concierge

The Hilton Minneapolis staff will gladly assist with restaurant reservations, city tours, airport transportation and general information about the Minneapolis area. Assistance is available at the Concierge Desk on the main lobby level daily during hours of operation.

## Council Advisory Group (CAG)

The Council Advisory Group serves as a liaison between the network, NMDP/Be The Match management, and the Board of Directors. The goal is to identify opportunities for improvement in Network operations, assist in resolution of issues posed by council members, and provide input and education recommendations for annual Council Meeting content.



### Council Advisory Group:

Front Row:  
Christy Satterlee

Second Row (L to R)  
Chris Cielak, Shakila Khan,  
Linda Eckenbrecht

Third Row (L to R)  
Yvonne Ybarra,  
Jill Kendall Erbe

Fourth Row (L to R)  
Hope Guidry-Groves,  
Gary Goldstein

Back Row (L to R):  
Kim Kasow,  
Melinda Caltabiano



## Dinner Entertainment

The Saturday evening event will feature entertainment from **MAZE**, a mystery performance piece that has traveled the world and bewildered audiences for the past decade. With his unique and innovative approach to entertainment, Magician Jim Munroe returns to entertain our group during our dinner event. The night will conclude with the first-time meeting of a donor/recipient pair!



## Education Advisory Team

The education advisory team members identified and planned the content of Council Meeting 2016.

## Grant Program

The Council Meeting Grant Program is designed to provide network center partners with greater flexibility and a rewarding Council Meeting experience. The grant program promotes a broad representation of our network, while being good stewards of resources available.

Each center that received a grant(s) has the flexibility to determine how their grant funds are allocated. Multi-center partners are strongly encouraged to send a minimum of one representative from each corresponding center type (TC, AC, CC, DC, CBB, RG), as applicable, to provide a broad representation and opportunity for learning across the organization. If a center receives multiple grants, the NMDP/Be The Match asks partners to send attendees from these particular center types.

Grant allocations are intended to be used toward expenses associated with Council Meeting, including travel, hotel, registration fees and mileage/parking. Centers will be reimbursed after the meeting based on the actual number of attendees that correspond with their grant allotment. One person must register and attend the meeting to claim a grant allotment.

Attendees must pick up their registration packet and name badge in order to confirm attendance at Council Meeting and qualify for their respective grant allotment.

The online form for grant allotment reimbursement is available at [Council Meeting 2016](#). Attendees should submit their completed forms by Nov. 30, 2016, to claim their center's reimbursement.

## Grant Reimbursement Check Pick Up

**NEW in 2016:** Attendees from U.S. centers who received a grant allocation, submitted an online grant reimbursement form by Sept. 15, 2016, and met all program requirements, will have the opportunity to pick up their check at the registration window between 4-6 pm on Saturday, Nov. 12. If grant recipient attendees are unable to pick up their check during this time, the check will be mailed to the affiliated center once attendance is verified after Council Meeting.

## Information Kiosk

Look for the Information Kiosk near the escalators on the 2nd floor of the Hilton Minneapolis for help with questions about Council Meeting, including meeting room locations, WiFi login details and the mobile app. For meeting information, you can stop at the Registration Desk on the 3rd floor.





## Meet & Greet: Council Advisory Group, Case Management and Patient and Health Professional Services Staff

Plan to stop into the Rochester Room during the Friday evening Networking Reception to visit with members of the Council Advisory Group and meet with your Case Management and Patient Services staff.

## Meeting Presentation Materials

Presentations or handouts available for downloading will be posted on the Council Meeting 2016 website after the meeting.

## Mobile App

Attendees are encouraged to download the mobile app for the meeting and use this throughout the conference. As a part of attendance, attendees agree to allow their contact information to be published in the Council Meeting mobile app, which is accessible only to registered attendees. Attendees can change this option in their profile once they download the mobile app.

## Name Badges

Attendee name badges must be displayed for admittance to all Council Meeting sessions and social events. Name badges will be available for pick up at the NMDP/Be The Match registration desk on the 3rd floor of the Hilton Minneapolis.



Ryan, Transplant Recipient





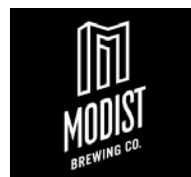
## Optional Tours

### Be The Match Office/Minneapolis Brew Tour: Thursday Only

Enjoy a beautiful, brisk fall tour of Minneapolis breweries and the new Be The Match Coordinating Center! The tour includes a Light Rail trip from the Hilton Minneapolis to the Be The Match Coordinating Center, where the group will get a tour of the new facility. After touring the Be The Match facility, the group will visit three local microbreweries.

The first brewery stop will be the **Fulton Brewery**, located across from the Be The Match building. Fulton was founded in 2009 out of a South Minneapolis garage. After visiting Fulton, the group will walk a block to the **Modist Brewing Co.**, which was started by four friends committed to starting a brewery based on the principle of modifying style guidelines that have dominated beer. The group will then take a shuttle to **Sociable Cider Werks** where attendees can enjoy a variety of hand-crafted ciders that are well carbonated, dry and always made from real apples. The group will then take the shuttle back to the Hilton.

The tour cost includes transportation fees and a commemorative T-shirt. Food and beverage costs are the responsibility of each attendee. Food trucks will be available at Fulton Brewery and Sociable Cider Werks.



Cost: \$35 per person

### The Fit Tourist Walking Tours: Thursday and Friday

Join us on a walking tour Thursday or Friday evening to see some of the historical, architectural and artistic sites of the Twin Cities and appreciate the natural beauty located right in our downtown area. This tour will showcase the illuminated buildings, Stone Arch Bridge and St. Anthony Falls area. If weather is an issue, the skyways will be incorporated into the tour. Tours typically last 1-1½ hours depending on the group size, the speed of the walkers, and how many pictures are taken.

Cost: \$15 per person

## Photography Release

As part of your registration for Council Meeting 2016, NMDP/Be The Match reserves the right to use videos and photographs taken during the meeting for future educational and marketing purposes.

## Registration Desk Hours

Thursday, Nov. 10	9:00 am to 7:00 pm
Friday, Nov. 11	7:00 am to 5:30 pm
Saturday, Nov. 12	7:30 am to 6:00 pm

## Shop Be The Match

Stop by to see current Be The Match apparel and merchandise. Purchase some great items to show your passion for saving lives. Net proceeds from your purchases directly support Be The Match Foundation.



## Sponsor Exhibits

Representatives from sponsoring organizations relative to HCT will be available to discuss their products and services.

### Schedule:

Friday, Nov. 11                7:00 am to 5:30 pm

Saturday, Nov. 12            7:30 am to 3:15 pm

## Wi-Fi

NMDP/Be The Match is pleased to provide meeting attendees with complimentary wireless internet access throughout the 2nd and 3rd floor meeting space and lobby of the Hilton Minneapolis. To connect, select the **Hilton wireless network: HHMeetings**, enter the **Username: BeTheMatch** and enter the conference code: **CM2016** when prompted. This code is not applicable to guest room Internet.



“I had a wonderful time at Council Meeting. I learned and grew so much while I was there. I felt like my eyes were opened and that everyone could have this experience. Council Meeting was an amazing experience.”

— 2015 Meeting Attendee



# SPONSORS/EXHIBITORS

The opportunity to exhibit at Council Meeting 2016 is reserved for sponsoring organizations. Organizations can choose from several sponsor level options listed below that offer a unique set of opportunities for engaging Council Meeting attendees.

## LIFESAVER: \$30,000

Exclusive Sponsor of the Saturday Night Closing Dinner Event [\[Confirmed Sponsor\]](#)

- Logo displayed on tables at closing dinner and acknowledgement from podium
- Sign displayed in exhibit booth announcing closing dinner sponsorship
- Company logo displayed on Council Meeting registration website
- Logo displayed in mobile app and at registration area
- Invitation to Sponsor Reception and reserved seating at Saturday Dinner
- One exhibit space and six Council Meeting registrations

## CHAMPION: \$20,000

Exclusive Sponsor of ONE of the following opportunities:

> Friday evening networking reception (logo displayed at reception)

> Attendee name badge holders (logo on badge holder) [\[Confirmed Sponsor\]](#)

- Company logo displayed on Council Meeting registration website
- Logo displayed in mobile app and at registration area
- Invitation to Sponsor Reception and reserved seating at Saturday Dinner
- One exhibit space and four Council Meeting registrations

## ADVOCATE: \$15,000

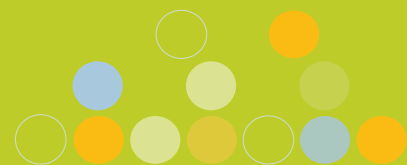
Exclusive Sponsor of ONE of the following opportunities:

> Mobile App (logo featured on top app screen banner)

> Promotional item for attendees (Item determined by Council Planning Team, logo on item)

> Wi-Fi (logo featured on login screen)

- Company logo displayed on Council Meeting registration website
- Logo displayed in mobile app and at registration area
- Invitation to Sponsor Reception and reserved seating at Saturday Dinner
- One exhibit space and four Council Meeting registrations



## AMBASSADOR: \$10,000

### Exclusive Sponsor of ONE of the following opportunities:

- > Hotel key cards with logo (logo placed on hotel room key cards) [Confirmed Sponsor]
- > Infused water station: Friday and Saturday, 3rd Floor (Logo displayed at kiosk) [Confirmed Sponsor]
- > Bottled water at hotel check in (Bottled water with logo wrap)
- > Hotel chocolates turndown service: Friday OR Saturday, Hilton only (Logo on chocolates)
  - Logo displayed in mobile app and at registration area
  - Invitation to Sponsor Reception and reserved seating at Saturday Dinner
  - One exhibit space and three Council Meeting registrations

## FRIEND: \$5,500

- Logo displayed in mobile app and at registration area
- Invitation to Sponsor Reception and reserved seating at Saturday Dinner
- One exhibit space and two Council Meeting registrations

Sponsorship opportunities will be awarded to organizations on a first-come, first-selected basis.

### Interested in Sponsorship?

Contact:

Angie Dahl

Be The Match Foundation®

Phone: 1 (763) 406-8670

Email: [adah1@nmdp.org](mailto:adah1@nmdp.org)





# KEY CONTACTS

## Registration and Logistics:

Contact Lisa Schuler at 1 (763) 406-4852 or [councilmeeting@nmdp.org](mailto:councilmeeting@nmdp.org)

## Speakers and Educational Sessions:

Contact Nicole Heino at (763) 406-4811 or [nheino@nmdp.org](mailto:nheino@nmdp.org)

## Save the Date

Council Meeting 2017: Nov. 10-11 in Minneapolis



“As the years go by, I am increasingly amazed by the miracle of bone marrow transplantation and by the goodness and generosity of those who make it possible.”

— *Nancy, Transplant Recipient*

