



SURVIVORSHIP AFTER TRANSPLANT •

MARIA “MARU” MACWILLIAMS, *Patient Services Coordinator, Bilingual*

From the time of diagnosis through survivorship, Maru and her colleagues provide tailored one-on-one support to hundreds of transplant patients and their caregivers.

“I can take all the time necessary to help patients and caregivers navigate the post-transplant journey,” she says. “I get a special satisfaction when helping Spanish-speaking patients understand transplant.”

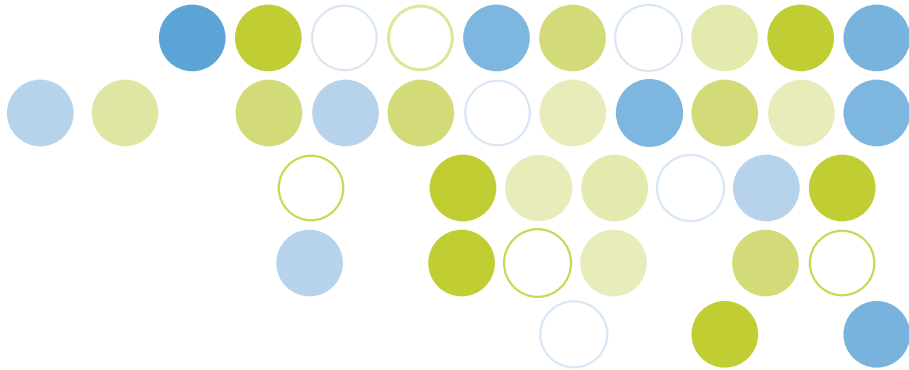
Maru and her fellow Patient Services Coordinators are available to serve patients as long as needed, even many years post transplant, by providing information and emotional support.

Case in point: When talking with a long-term survivor, Maru recognized a sign of a potential transplant-related complication and encouraged him to consult with his transplant center. Her actions helped that patient get the follow-up care he needed.

Providing one-on-one patient support is one way we can help you in the area of survivorship. Turn this sheet over to explore our survivorship services and expertise.

— Maru has been helping transplant patients, caregivers and families since 2004





SURVIVORSHIP AFTER TRANSPLANT

As more patients become long-term survivors, the need for support and education increases. We can help with that. Partner with us to help your patients and their caregivers live healthy lives after transplant.

We can help...

When your patients need personalized support

- If your patients need one-on-one support, our experienced **Patient Services Coordinators** are available to supplement your staff's expertise. We can connect patients with resources, and will devote as much time as they need.
- Sometimes the best support can come from someone who has a shared experience. With our **Peer Connect** program, we can connect your patients with transplant recipients who can answer questions and share their personal experiences.
- Use our **free resources** made especially for patients living life after transplant: e-newsletter, magazines, follow-up care guidelines and more. All resources are carefully reviewed by experts for medical accuracy and easy readability.
- Financial worries add stress when your patients should be focusing on recovery. Our **post-transplant financial assistance grants** can help your patients pay for post-transplant out-of-pocket costs.

When your community physicians need post-transplant resources

- As your patients return to their community physicians, they may need guidance on how to care for them. We offer **free clinical guidelines** with post-transplant care and GVHD screening recommendations to help you communicate the care needed following transplant.

When your patients want to connect with their donors

- We can help you manage **donor-recipient communications**, and assist you in navigating the many policies regarding donor-recipient confidentiality.

OUR COMMITMENT TO RESEARCH IN THE AREA OF SURVIVORSHIP:

Through our research program, the CIBMTR, the data you submit contribute to the outcomes registry with data on more than 390,000 transplant recipients. This information is used to conduct research that has led to remarkable improvements in transplant survival.



Learn how we can help you support your patients and their community physicians at:

Network.BeTheMatchClinical.org/survivorship