

SARAH CANNON VISION STATEMENT



People who live with cancer – those who work to prevent it, fight it, and survive it – are at the heart of every decision we make. Bringing the most innovative medical minds together with the most passionate caregivers in their communities, we are transforming care and personalizing treatment. Through clinical excellence and cutting edge research, Sarah Cannon is redefining cancer care around the world.

Introductions: Sarah Cannon



Dee Anna Smith
Chief Executive Officer



Dr. Skip Burris
President, Clinical Operations



Dr. Richard Geer
Physician-in-Chief
Surgical Oncology



Dr. Fred LeMaistre
VP, Physician-in-Chief
Hematology



Dr. Andy Kennedy
Physician-in-Chief
Radiation Oncology



Rocky Billups
VP, Operations
Hematology/BMT



John Hennessy
VP, Operations



Brian Marger
VP, Operations
Radiation Oncology



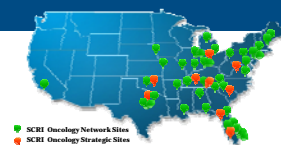
CONFIDENTIAL AND PROPRIETARY © 2012 Sarah Cannon.

3

HCA / Sarah Cannon Highlights

SCRI

- One of the most prominent drug development programs in the US
 - Conducted over 110 "first in man" clinical trials
 - Contributed to the approval of 30+ commercially available drugs
 - Recognized with largest solid tumor scientific presence at ASCO
 - First private Drug Development Program in UK



Blood Cancer Network

- >850 transplants in 2012
 - Over 9,000 transplants to-date



Quality

- 74 CoC-accredited programs which provide oncology services at 98 HCA facilities
 - 15 received Outstanding Achievement Award (OAA)



Radiation Oncology

- Third largest provider of radiation oncology services in the nation
 - Ranks behind 21st Century and US Oncology
- 51 Centers
 - 32 Stereotactic surgery (SRS) capable assets (9 Cyberknife; 9 GammaKnife)

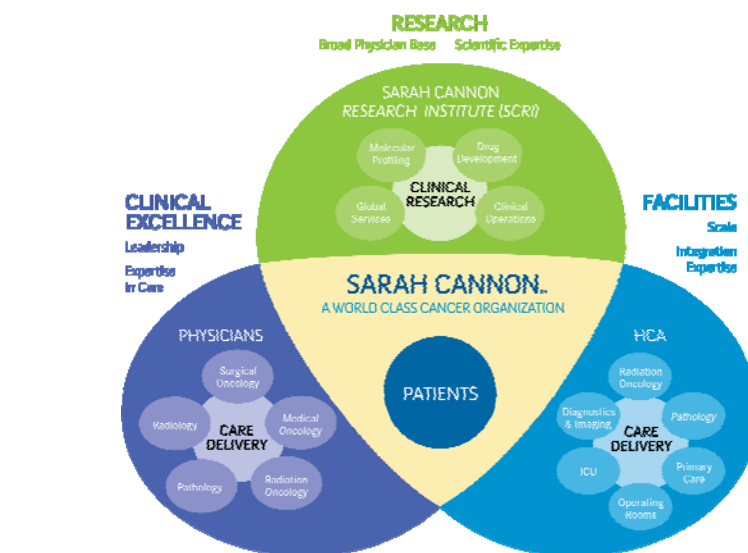
*Revenue and Volumes according to public 10k filing



CONFIDENTIAL AND PROPRIETARY © 2012 Sarah Cannon.

4

SARAH CANNON MODEL

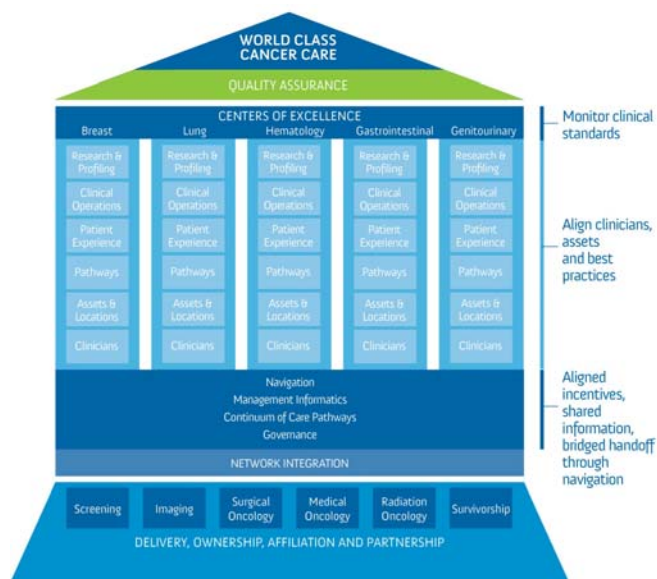


SARAH CANNON

CONFIDENTIAL AND PROPRIETARY © 2012 Sarah Cannon.

5

World Class Cancer Centers Of Excellence

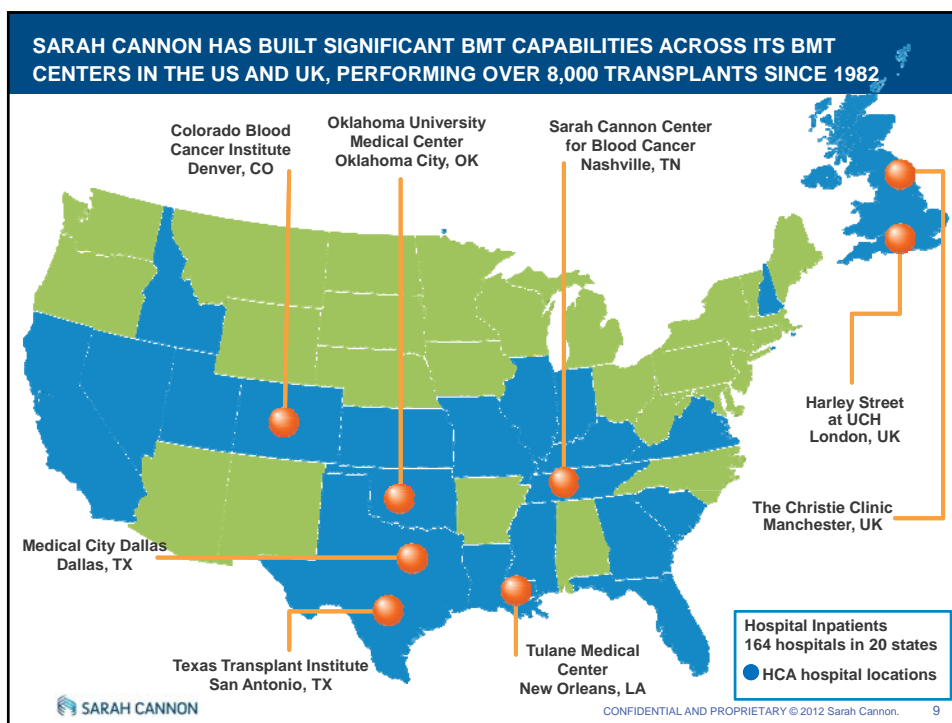


SARAH CANNON

CONFIDENTIAL AND PROPRIETARY © 2012 Sarah Cannon.

6





SARAH CANNON HAS STRONG OVERALL TRANSPLANT VOLUME

Facility	2012 Transplants		
	Auto	Allo	Total
Methodist Hospital San Antonio	142	77	219
Presbyterian / St. Luke's Medical Center Denver	177	98	275
Medical City Dallas Hospital Dallas	73	39	112
Oklahoma University Medical Center Oklahoma City	71	46	117
Centennial Medical Center Nashville	48	11	59
HCA International London & Manchester	23	15	38
Tulane University Hospital New Orleans	15	16	31
Network total	549	302	851

SARAH CANNON

CONFIDENTIAL AND PROPRIETARY © 2012 Sarah Cannon. 10

INTEGRATION IS THE KEY TO SUCCESS

SCRI Blood Cancer Research Consortium

● Research asset base

● Strong pharma interest

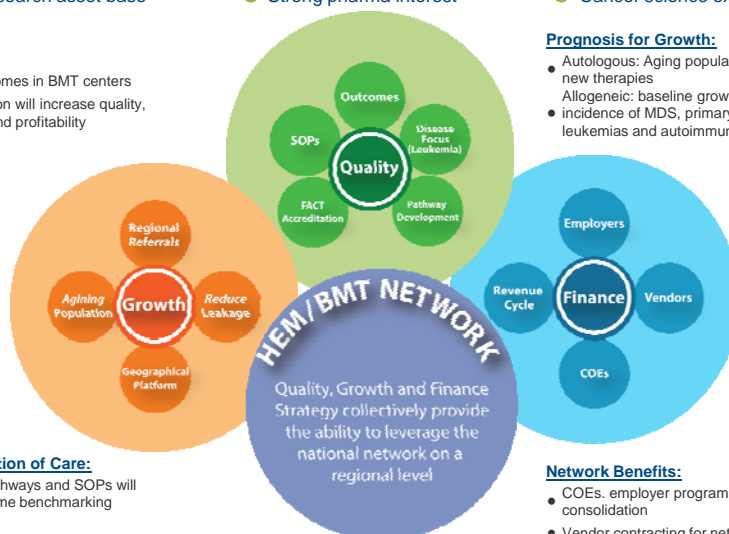
● Cancer science experts

Leukemia:

- Better outcomes in BMT centers
- Consolidation will increase quality, efficiency and profitability

Prognosis for Growth:

- Autologous: Aging population will level set new therapies
- Allogeneic: baseline growth through rising incidence of MDS, primary and secondary leukemias and autoimmune disease.



Standardization of Care:

- Network pathways and SOPs will allow outcome benchmarking

Network Benefits:

- COEs, employer programs and geographic consolidation
- Vendor contracting for network volume

SARAH CANNON

CONFIDENTIAL AND PROPRIETARY © 2012 Sarah Cannon.

11

CONSOLIDATION OF ACCREDITATION, TRAINING AND DATA COLLECTION ACTIVITIES PROVIDES COST SAVINGS AND IMPROVE FACILITY OPERATIONS

Accreditation Support

- Shared resource to support facility accreditation- FACT and other accreditations
- Develop accreditation best practices- data, application process, requirements, etc
- Standardized quality plan and metrics- audits, outcome analysis, corrective actions and regulatory reporting

Standardized training and onboarding

- Adopt standard operating procedures (SOPs) and training
- Build BMT specific HealthStream training – annual and new hire
- Network metrics for staffing level and skill mix

Quality and Financial Analytics

- Develop centralized BMT database
- Integrate BMT data with other shared data resources (e.g. cancer registry)
- Assist with national reporting and managed care RFIs
- Identify quality and treatment improvement opportunities

Centralized BMT Data

- Provide centralized data tracking and analytics
- Develop BMT program benchmarks – outcomes, cost

Network Purchasing

- Provide savings from shared purchasing – supplies, equipment, outsourced lab services, pharmacy, IT and systems

Standards of Practice

- Common clinical protocols
- Standard order sets

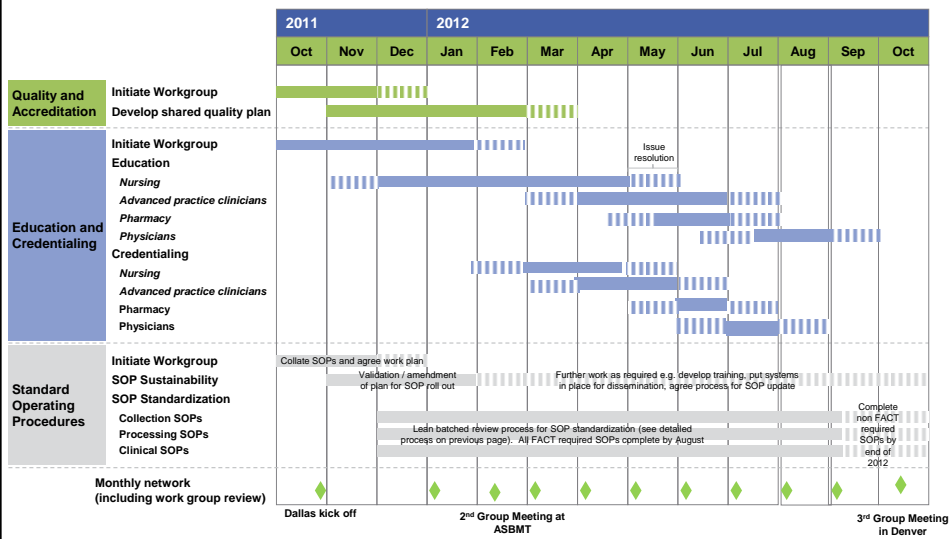
SARAH CANNON

CONFIDENTIAL AND PROPRIETARY © 2012 Sarah Cannon.

12

WHAT IT TOOK: OVERALL TIMELINE

12 months to standardize education and credentialing, quality and accreditation and SOPs



SARAH CANNON

CONFIDENTIAL AND PROPRIETARY © 2012 Sarah Cannon.

13

SARAH CANNON BLOOD CANCER NETWORK OPERATIONS - STANDARDIZATION



SARAH CANNON

CONFIDENTIAL AND PROPRIETARY © 2012 Sarah Cannon.

14

SARAH CANNON BLOOD CANCER NETWORK OPERATIONS - STANDARDIZATION



OUR OBJECTIVE

- Implement a unified platform across the multiple departments of BMT to provide an integrated solution for Patient Management, Research and Data Management, and Cellular Therapeutic Products



Driving towards Standardization of Practice

- Align workflow processes across all divisions based on compliance and action-based rules
 - Utilize Enterprise Architecture to streamline operations across all programs affiliated with the Sarah Cannon Blood Cancer Network
 - Allows for corrective action/incident management around regulatory compliance with the FDA, FACT, HIPAA, CIBMTR standards



Standardization allows for Accurate Data Reporting across the Network

- Provide Enterprise-wide Data Management to standardize aggregated data for research, quality, and financial Payor/RFI operations.
 - Outcomes reporting: Auto-populate ASBMT Annual RFI forms
 - Survival Statistics and Length of Stay by Type of Transplant
 - Disease-specific and by degree of Antigen Mismatch
 - Internal Auditing capability of Billing based on key milestones as patient progresses through the Transplant Continuum of Care

SUMMARY OF PRODUCT LINE

Apheresis & Cellular Therapy lab

- Simple, intuitive, workflow driven application
- Accurate data capturing at Point of Processing
- ISBT-128 Standards embedded in the system

Patient & Donor Management

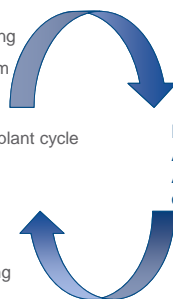
- Comprehensive data capturing during Transplant cycle
- Accelerated outcome reporting

Quality Management (Comaiba)

- FACT and JACIE compliant
- Active monitoring and quality control reporting

Adverse Event Management (Aversi)

- Complete AE & GVHD data capturing at Point of Care
- Immediate event history reporting



Data Management:
Automation of CIBMTR forms via
AGNIS based on data entered at point
of care and workflow.